



Technical Information

Empty Container Handling

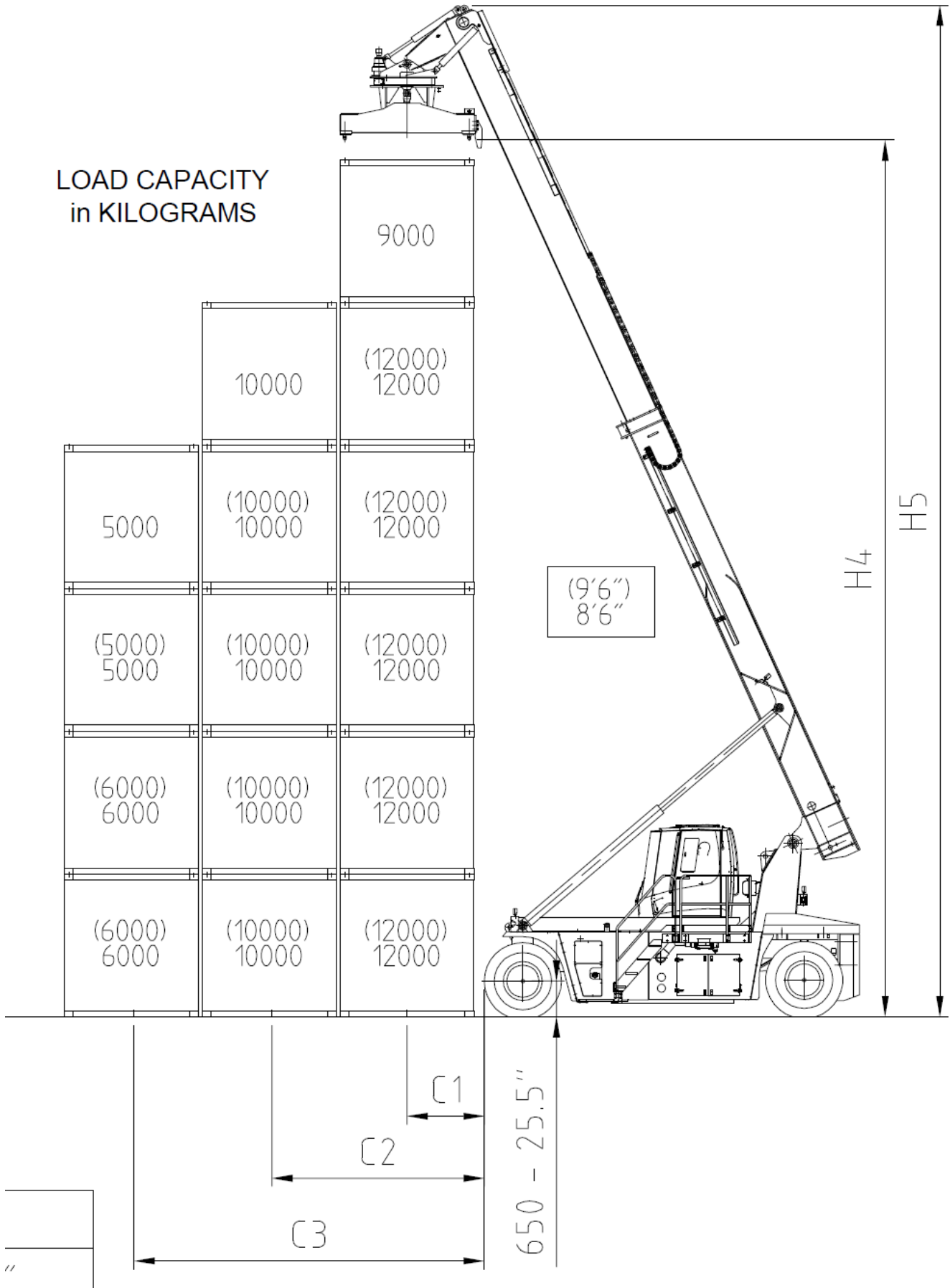
CVS FERRARI
F500-RSE

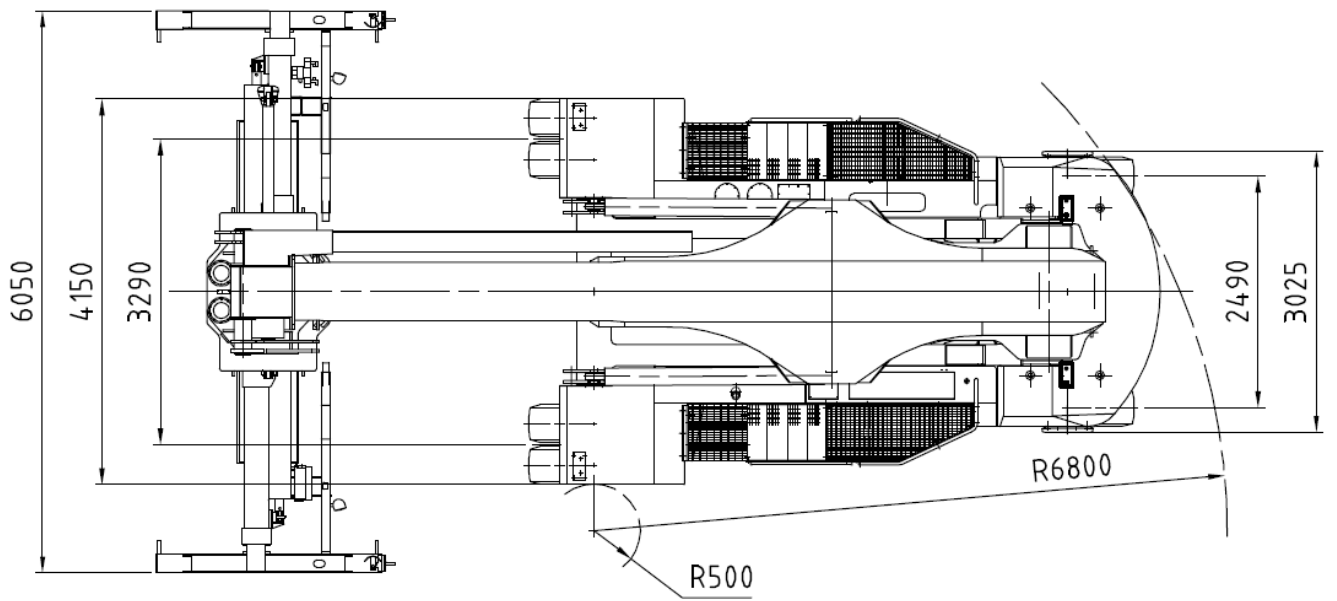
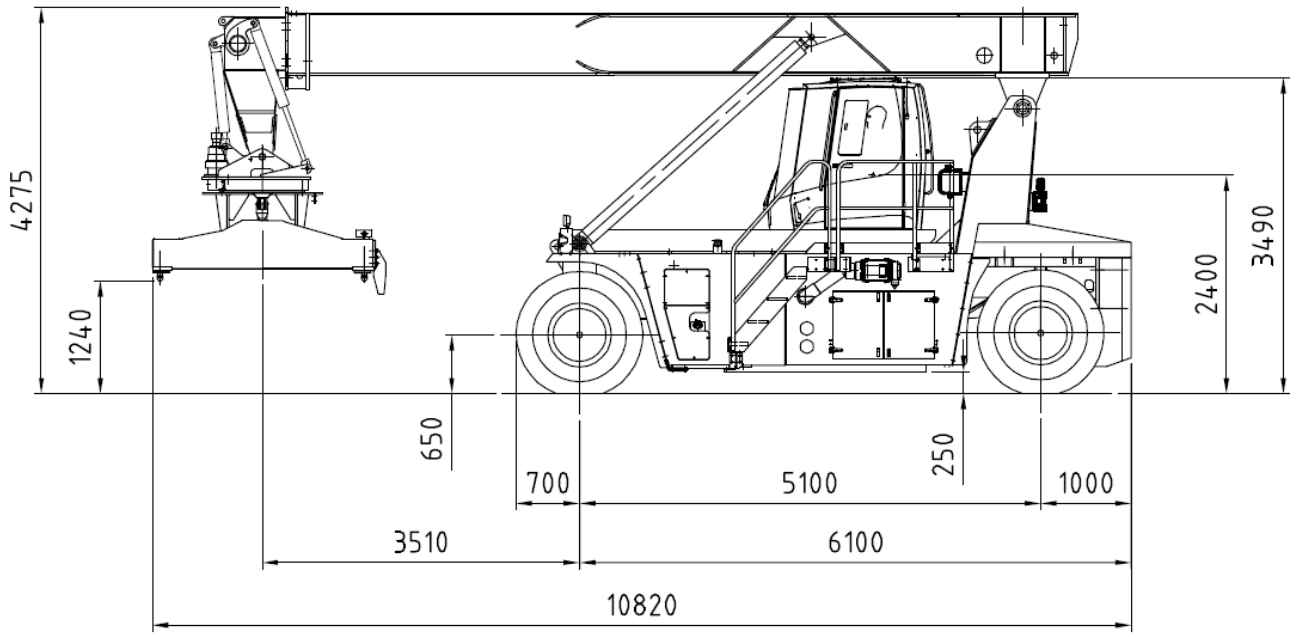
SPECIFICATION	01 Manufacturer			CVS FERRARI
	02 Model			F500-RSE
	03 Lifting capacity	First Row/Second Row	Kg.	12000/10000
	04 Load Center	First Row/Second Row	mm.	1550/3850
	05 Power unit			Diesel engine
	06 Steering			Steering wheel in the cab
	07 Tyre type	Front / Rear		Pneumatic
	08 Wheels	Number at Front/Rear (*=driven)		4*/2
DIMENSIONS	09 Lifting Height	Under Spreader - First Row	mm.	15875
	10 Width of Spreader	20 Ft.	mm.	6052
	11 Side Tilting	Mechanical	Deg.	+/- 3
	12 Rotation	Hydraulic-	Deg.	-95 + 185
	13 Side shifteing	Max	mm.	+/- 800
	14 Boom Angle	Min / Max	Deg.	0 / 65
	15 Overall dimensions	Length	mm.	10455
		Width	mm.	4143
		Boom height, Min.	mm.	4275
	18	Boom height, Max	mm.	18290
	19	Seat height	mm.	2400
	20	Min. dist. spreader from ground	mm.	1240
	21 Turning radius	Inner/Outer	mm.	500 / 6800
22 Distance from front axle	Center to load, first row	mm.	2250 - 3390	
23 Aisle for 90° stacking	Incl. 200 mm. safety margin	mm.	13380	
PERFORMANCE	24 Stability	DIN 15018 (Yes/No)		Yes
	25 Speeds	Travelling F. & R. Laden/Unladen	km/h	23.7/24.1
		Lifting (empty/booster/laden)*	m/s	0,47 / 0,57 / 0.32
		Lowering	m/s	0.40
	28 Drawbar pull	Max - Laden	kN	181
	29 Gradeability	Cont. at 2 Km/h - Laden	%	28
Max at 0 km /h - Laden		%	34	
WEIGHTS	31 Gross vehicle weight		Kg.	41700
	32 Axle load - Front	Unladen	Kg.	23800
		Laden L1	Kg.	37800
	33 Axle load - Rear	Unladen	Kg.	17900
Laden L1		Kg.	15900	
TYRES BRAKES CHASSIS	34 Tyres	Number - Front/rear		4/2
	35	Size - Front	ins.	14.00-24 28 PR
	36	Size - Rear	ins.	14.00-24 28 PR
	37 Wheelbase		mm.	5100
	38 Track	Between centres - driven wheels	mm.	3288
	39 Ground clearance	Mid-way along the wheelbase	mm.	250
	40 Foot brake system	Type/ brake wheels		Multiple wet disc brakes/ Driven Wheels
STEERING SYSTEM	41Type			Hydrostatic
DRIVING SYSTEM	42 Engine	Manufacturer - Type		VOLVO TAD871VE
	43	Rating - SAEJ1995	kW	185
	44	Rated Speed	RPM	2200
	45	Peak Torque - at engine speed	Nm/RPM	1160/1500
	46	Number Cylinders - displacement	cm3	6/7700
	47	Compression Ratio		17.2:1
	48	Fuel Consumption (Average)	l/h	10
	49 Alternator	Type - Rating	A	90
	50 Starting Batteries	Voltage - Capacity	V/Ah	2 x 12 V / 180
	51 Drive Axle	Type		With double reduction
	52 Gear Box	Type-number of gears forwar/rev.		DANA CLARK TE17 - 3/3
53 Clutch	Clutch type		Torque converter	
	54 Hydraulic pressure	For attachments	Bar	140
	55 Sound Level	Inside cabin (EN 12053)	dB(A)	75

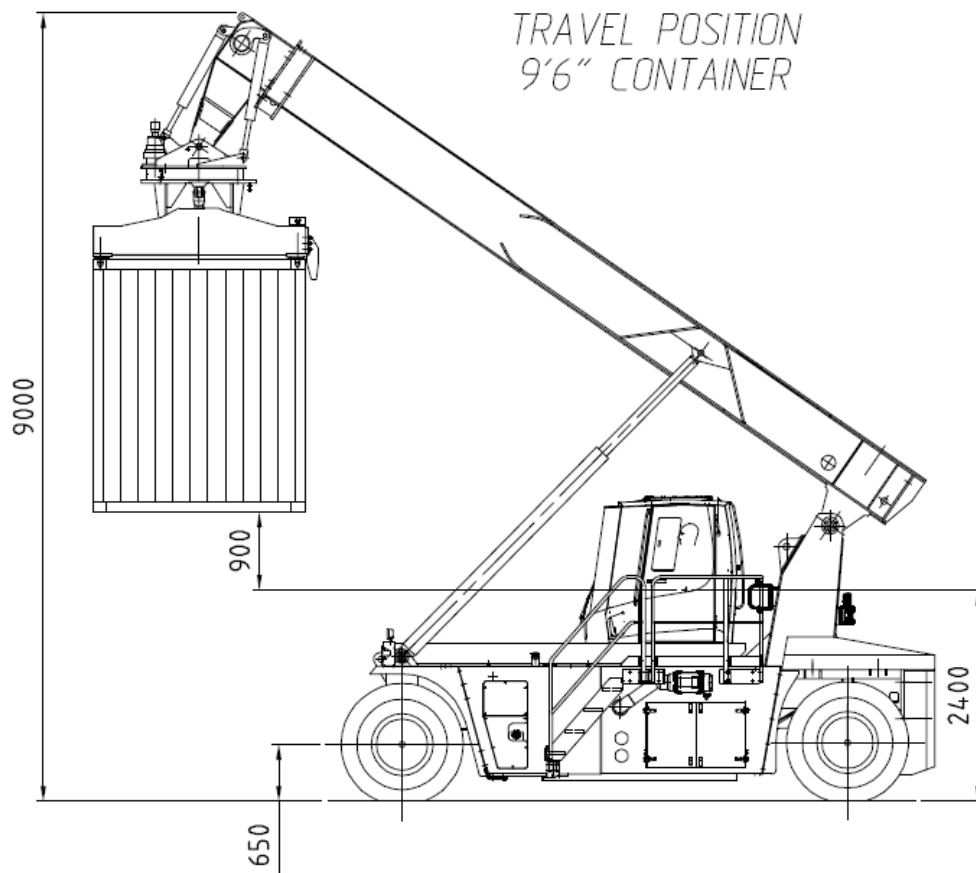
* Lifting booster optional

CVSFerrari F500-RSE

LOAD CAPACITY
in KILOGRAMS







CHASSIS

All welded box type. Highest strength. Torsion resistant structure.

ENGINE

VOLVO TAD871VE

EU Stage IV. Low pollution level. Eurostandard. Lowest fuel consumption and best performances.

TRANSMISSION

DANA CLARK TE17

Integrated torque converter and power shift . 3 Speeds forward and 3 speeds reverse

FRONT AXLE

Epicicloidial hub reduction plus central reduction (bevel gear and pinion). Wet discs brakes.

REAR AXLE

Articulating axle with double acting single cylinder. Full hydrostatic steering system (Orbitrol).

HYDRAULIC SYSTEM

Variable displacement pumps. Load sensing distributors controlling, lifting and steering. Hydraulic and proportional joystic. Oil cooling system .

ELECTRICAL SYSTEM

The most reliable and easy to service. 24 V. - Two 12 V. batteries of low maintenance type. High performance alternator.

BOOM

High torsion. High quality steel. New design - One basic section and one telescopic section.

TOP SPREADER:

High quality steel. Compact and precise. Telescoping from 20' to 40'. All functions controlled from cab. Safety sensors on four corners.

The illustrations and data contained in this brochure are not binding. The manufacturer reserves the right to make changes for any reason while not altering the primary specifications



CVS FERRARI S.r.l. - Via Emilia - 29010 Roveleto di Cadeo (PC) ITALY
 Tel. ++39.0523.503511 - Fax ++39.0523.500439
 E-mail: info.mktg@cvsferrari.com

Distributed & Serviced by:



EMPTY CONTAINER HANDLING REACHSTACKER

THE
BOX
SWINGER

RSE



CVS FERRARI new RSE model dedicated Empty Container Handling Reach Stacker is a full member of the worldwide successful F500 Reach Stacker family and a predestined star of the industry. No other equipment of its class has in fact ever featured the performances and features of this machine that has been thought to endure the heaviest working environments lasting in full service much longer than its competing equivalents. Its superior structural design class, its higher capacity and more advanced systems enable RSE to be the rentless BOX SWINGER of the Empty Container Handling business.



LOADING ABILITY
CAPACITY IN TON

F500-RSE

CTS 8'6" (9'6")	1 st row	2 nd row	3 rd row
6 th high	9	-	-
5 th high	12 (10)	9	-
4 th high	12 (12)	10 (9)	5
3 rd high	12 (12)	10 (10)	5 (5)
2 nd high	12 (12)	10 (10)	5 (5)
1 st high	12 (12)	10 (10)	5 (5)

BETTER
THAN
EVER





E mpty Container Handling Reach Stackers are requested to be extremely manoeuvrable whilst approaching and handling containers at multiple positions to successfully adapt to the many tasks the users are demanding them to perform. For these special jobs the container handling industry can now bank on the unprecedented skills and abilities of CVS FERRARI RSE, the most versatile and dependable BOX SWINGER ever seen before. With Twelve (12) ton capacity in the first row RSE is the most powerful machine in its class and it combines this with the shortest turning radius and working aisles, making it also the most manoeuvrable and flexible Empty Container Reach Stacker of choice.

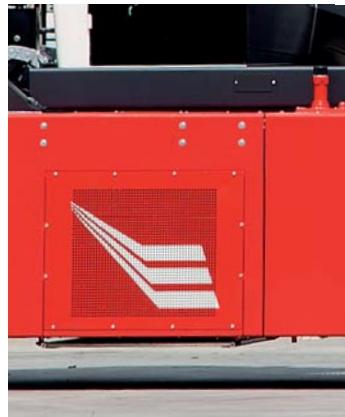
THE TRUE BOX SWINGERS





The all high tensile strength light and super strong spreader enables RSE to grant full second and third row and to handle "end on" 40' even 45' containers in full safety and guarded by a computer managed boom-spreader anti-collision device. The spreader has a generously sized rotation gear, moved by two large gear reducers and motors and it is stepless controlled by the truck on board in its rotation and side-shift motions.





The manually sliding cab leaves complete access to the engine and transmission bay and routine maintenance tasks are made easier by conveniently repositioned fluid level refill cum check points and filters. The roomy Electric System compartment contains and protects the already all-weather proof IP 67 main electric box and system components.

RSE features the same high performance electronically controlled hydraulics of the CVS FERRARI F500 Laden container handling reach stackers and the same oversize hydraulic oil and wet disk brakes oil cooling system. The wide track front drive axle and the sturdy "sandwich type" ultra wide steer axle with rubber shock absorbers are standard features.



SMARTER SAFER EASIER



The most modern and spacious driver's environment is completed by the most advanced and powerful on-board computer system ever featured by this kind of equipment. The life of users and owners of Empty Container Handling Reach Stackers has never been this easy.





FERRARI

CVS FERRARI S.R.L.
VIA EMILIA LOC FAVORITA
29010 ROVELETO DI CADEO (PC) ITALY
Tel. +39.0523.503511
www.cvsferrari.com



www.badini.com

CVS FERRARI S.R.L.
IS A DIVISION OF
MANITEX INTERNATIONAL

