



## Technical Information

# Reach Stackers

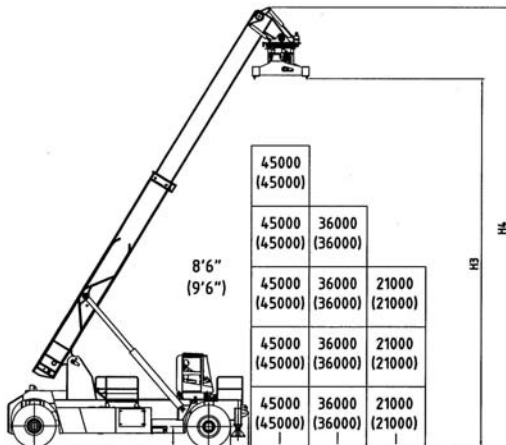
**CVS FERRARI**  
**F 481**

SPECIFICATION	O1 Manufacturer			CVS FERRARI	CVS FERRARI	CVS FERRARI		
	O2 Model			F 481	F 481 PB	F 481 BH		
DIMENSIONS	O3 Lifting capacity		First Row/Second Row	Kg.	45000/36000	45000/31000	42000/32000	
	14 Overall dimensions	Length with spreader		mm.	13015	13015	13015	
		15	Width	B	mm.	4160	4160	4160
		16	Boom height, Min.	H1	mm.	4920	4920	4920
		17	Boom height, Max	H4	mm.	18900	19000	19000
		18	Height - Top of Cab	H5	mm.	3884	3884	3034 (6264 with elevat. Cab)
		19	Seat height	H	mm.	2780	2780	2900 (5214 with elevat. Cab)
DRIVING SYSTEM	40 Engine		Manufacturer - Type				CUMMINS QSM11	
	41	Rating	kW/(hp)	250 (335)	250 (335)	250 (335)		
	42	Rated Speed	RPM	2100	2100	2100		
	43	Peak Torque - at engine speed	Nm/RPM	1674 / 1400	1674 / 1400	1674 / 1400		
	44	Number Cylinders - swept volume	cm3	6 / 1080	6 / 1080	6 / 1080		
	45	Compression Ratio		16.3:1	16.3:1	16.3:1		
	51 Clutch	Clutch type		Torque converter				
52 Hydraulic pressure	For attachments		Bar	140	140	140		
53 Sound Level	Inside Cabine		dB(A)	EN 12053	EN 12053	EN 12053		

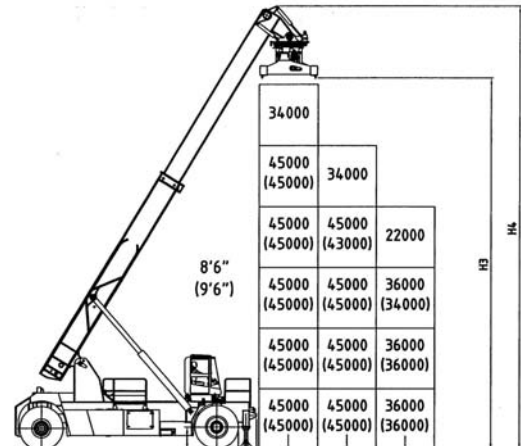
\* Booster option

## Ferrari mod. F 481

With stabilizers up

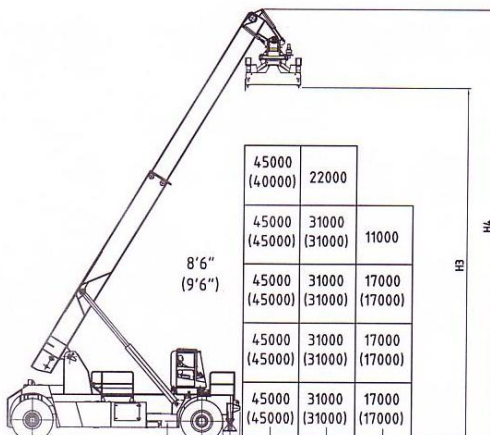


With stabilizers down

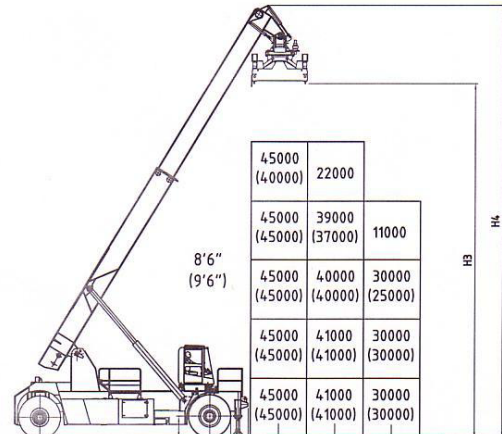


## Ferrari mod. F 481 PB

With stabilizers up



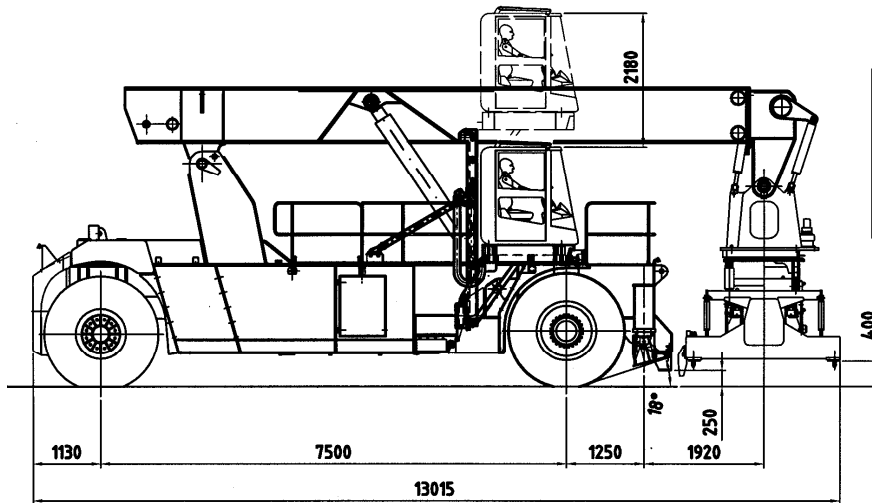
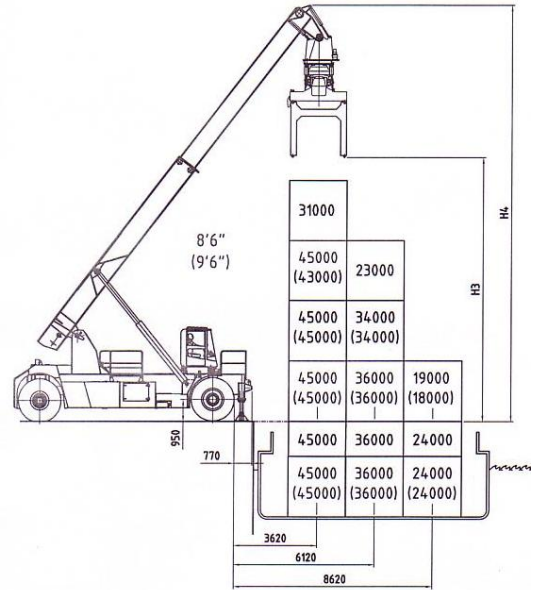
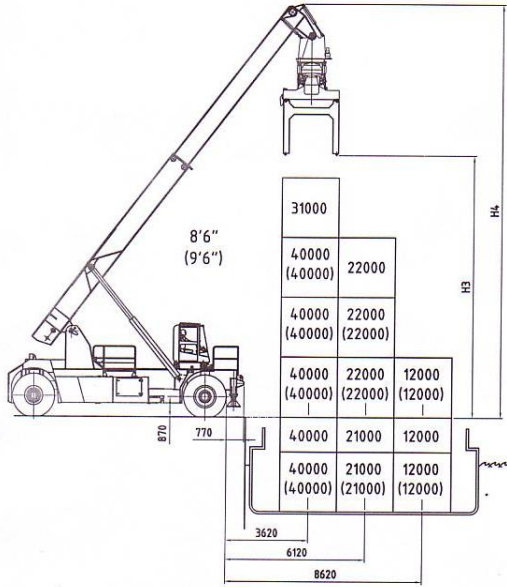
With stabilizers down



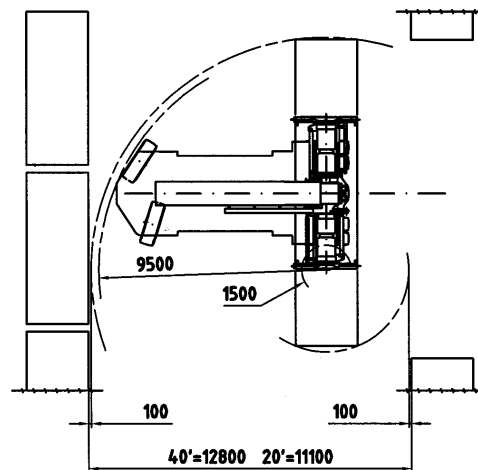
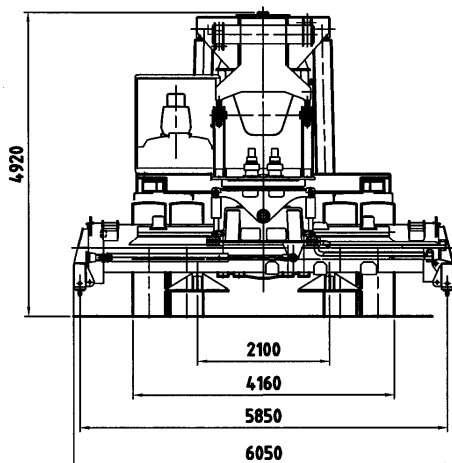
# Ferrari mod. F 481 BH

With stabilizers up

With stabilizers down



Elevating cabin located in right side position and foldable twist lock extension to handle containers on barges are optional



**CHASSIS**

All welded box type. Torsion resistant structure. Low center of gravity.

**ENGINE**

CUMMINS QSM11.

Euromot step 3. Best performances and lowest fuel consumption. Low polluting level.

**TRANSMISSION**

CLARK TE32 - Integrated torque converter and power shift - 4 Speeds forward and 4 speeds reverse.

**FRONT AXLE**

Extra wide front axle for maximum stability. Hub reduction. Wet disc brake. Oil cooling. Extra heavy duty type.

**REAR AXLE**

Articulating axle with double acting single cylinder. Rubber shock absorbers. Full hydrostatic steering system (Orbitrol) with priority valve.

**HYDRAULIC SYSTEM**

Variable displacement pumps. Load sensing proportional distributor controlling telescoping and lifting. Anti-saturation LUDV system.

Electrical multifunctional joystick. Oil cooling system.

**ELECTRICAL SYSTEM**

Modular system with diagnostic capability. Reliable and easy to service. 24V. - Two 12V. batteries of low maintenance type.

Electric/electronic control of the machine based on CAN BUS technology.

**BOOM**

High torsion - High quality steel. One basic outer section and one inner telescopic section.

**SPREADER:**

Highest strength steel. Compact and precise. Telescoping from 20' to 40'. All functions controlled from cab. Side mechanical tilting. Damping cylinder. Safety sensors on four corners.



CVS FERRARI S.r.l. - Via Emilia - 29010 Roveleto di Cadeo (PC) ITALY  
Tel. ++39.0523.503511 - Fax ++39.0523.500439  
E-mail: info.mktg@cvsferrari.com

*Distributed & Serviced by:*