

# Order picking truck 1.0 ton

## BT optio

*M-series*

OME100N

OME100NW



# Order picking truck

Truck specifications					OME100N	OME100NW
Identification	1.1	Manufacturer			Toyota	Toyota
	1.2	Model			OME100N	OME100NW
	1.3	Drive			Electric	Electric
	1.4	Operator type			Stand on	Stand on
	1.5	Load capacity/rated load	Q	kg	1000	1000
	1.6	Load centre	c	mm	600	600
	1.8	Load distance, back of fork to wheel centre	x	mm	158	110
	1.9	Wheelbase	y	mm	1401	1350
	Weight	2.1	Service weight without battery		kg	1577 <sup>1)</sup>
2.2		Axle load, with load, drive/support arm wheels		kg	615/1280	639/2459
2.3		Axle load, without load, drive/support arm wheels		kg	1235/450	1208/884
Wheels	3.1	Drive / castor / fork wheels			Polyurethane	Polyurethane
	3.2	Wheel size, front		mm	250 x 92	250 x 92
	3.3	Wheel size, rear		mm	140 x 80	140 x 80
	3.4	Additional wheels, dimensions		mm	—	—
	3.5	Wheels, number front/rear (x = driven wheels)		mm	1x/2	1x/2
Dimensions	4.2	Height, mast lowered	$h_1$	mm	2450	2450
	4.4	Lift movement	$h_3$	mm	1620	1620
		Lift height	$h_{23}$	mm	2480	1700
	4.5	Height, mast extended	$h_4$	mm	4070	4070
	4.8	Stand height	$h_7$	mm	180	180
	4.11	Additional lift	$h_9$	mm	780	—
	4.14	Stand height, elevated	$h_{12}$	mm	1800	1800
	4.15	Height, fork lowered	$h_{13}$	mm	80	80
	4.19	Overall length	$l_1$	mm	2890	2798
	4.20	Length to face of forks	$l_2$	mm	1740	1648
	4.21	Overall width	$b_1$	mm	810	810
	4.22	Fork dimensions	s/e/l	mm	62/115/1150	62/115/1150
	4.25	Width over forks	$b_5$	mm	300-750	560, 655, 776
	4.32	Ground clearance, centre of wheelbase	$m_2$	mm	55	55
4.35	Turning radius	$W_a$	mm	1590	1540	
4.44	Clear width driver compartment entrance	$l_{24}$	mm	490	490	
Performance data	5.1	Travel speed, with/without load *		km/h	7,0/12,0	7,0/12,0
	5.2	Lift speed, with/without load		m/s	0,12/0,19	0,12/0,19
	5.3	Lowering speed, with/without load		m/s	0,12/0,19	0,12/0,19
	5.8	Max. gradeability, with/without load <sup>2)</sup>		%	5/6	5/6
	5.10	Service brake			Electromagnetic	Electromagnetic
Electric motor	6.1	Drive motor rating S2 60 min		kW	2,8	2,8
	6.2	Lift motor rating S3 5%		kW	2,2	2,2
	6.4	Battery voltage, nominal capacity $K_5$		V/Ah	24/465, 620	24/465, 620
	6.5	Battery weight, min./max.		kg	475-530	475-530
	6.6	Energy consumption acc to VDI cycle <sup>3)</sup>		kWh/h		
	Other	8.1	Type of drive control			BT Powerdrive
8.4		Sound level at the driver's ear according to EN 12 053		dB(A)	60	60

1) With small battery, add 125 kg counterweight.

2) Measured according to company standard.

3) Contact your supplier for information.

\* Travel speed in fork direction: 6,0/10,5 km/h for all models.

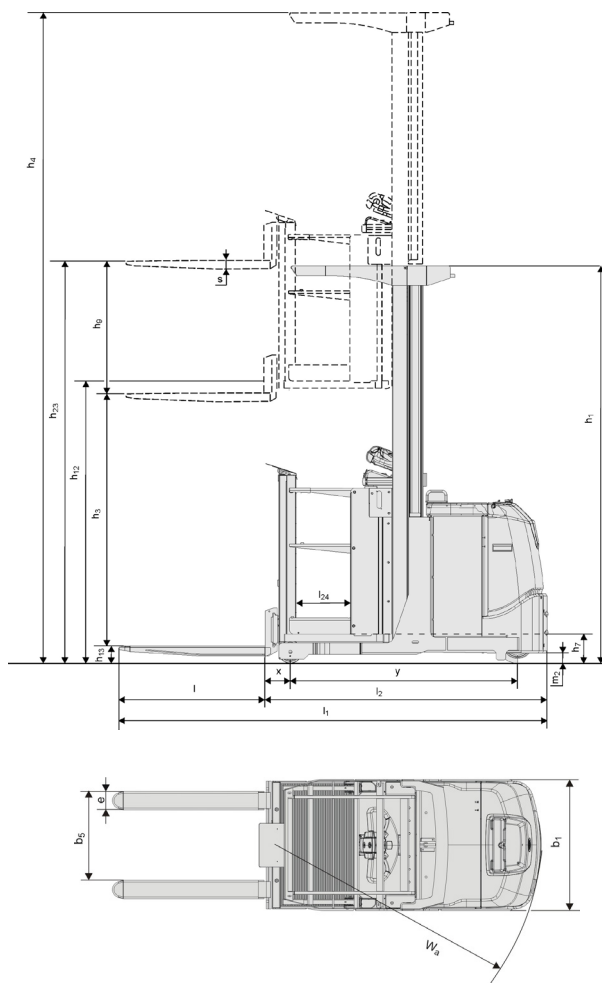
All data are based on table configuration. Other configurations may give other values.

Truck performance and dimensions are nominal and subject to tolerances.

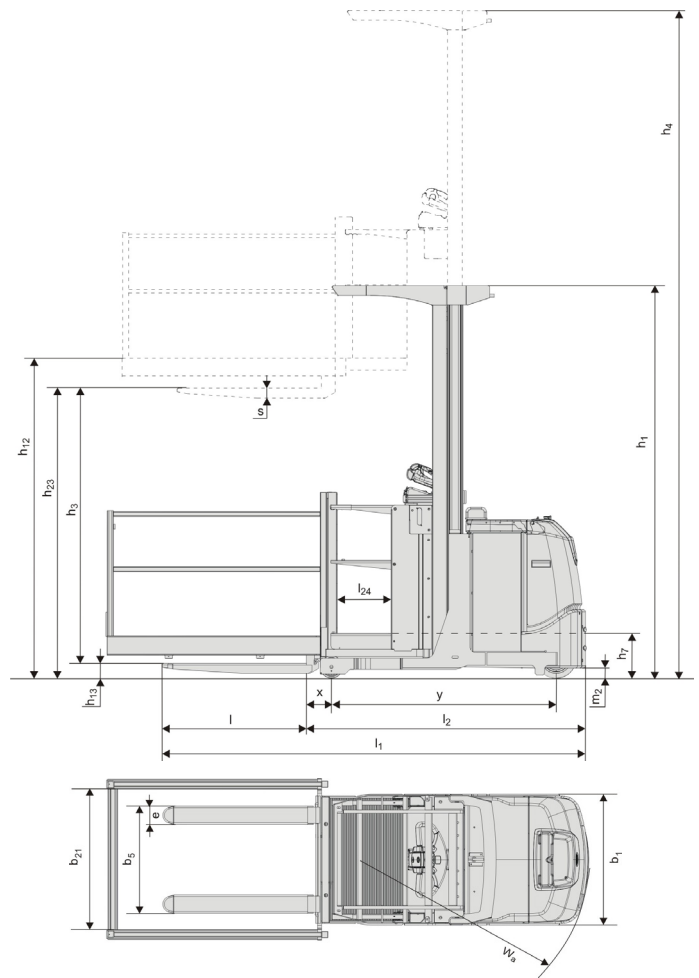
Toyota Material Handling Manufacturing Sweden AB products and specifications are subject to change without notice.

# Dimensional drawings

OME100N



OME100NW



---

## Truck features:

- High performance models
- BT E-man steering concept
- Low step-in
- Man-up possibilities
- BT Powerdrive system
- Integrated shrink film holder
- Streamlined administration
  - E-bar concept (option)



TMHE-Toyota Material Handling Europe — 746650-040, version 6, 2019-08-01

**TOYOTA**

MATERIAL HANDLING